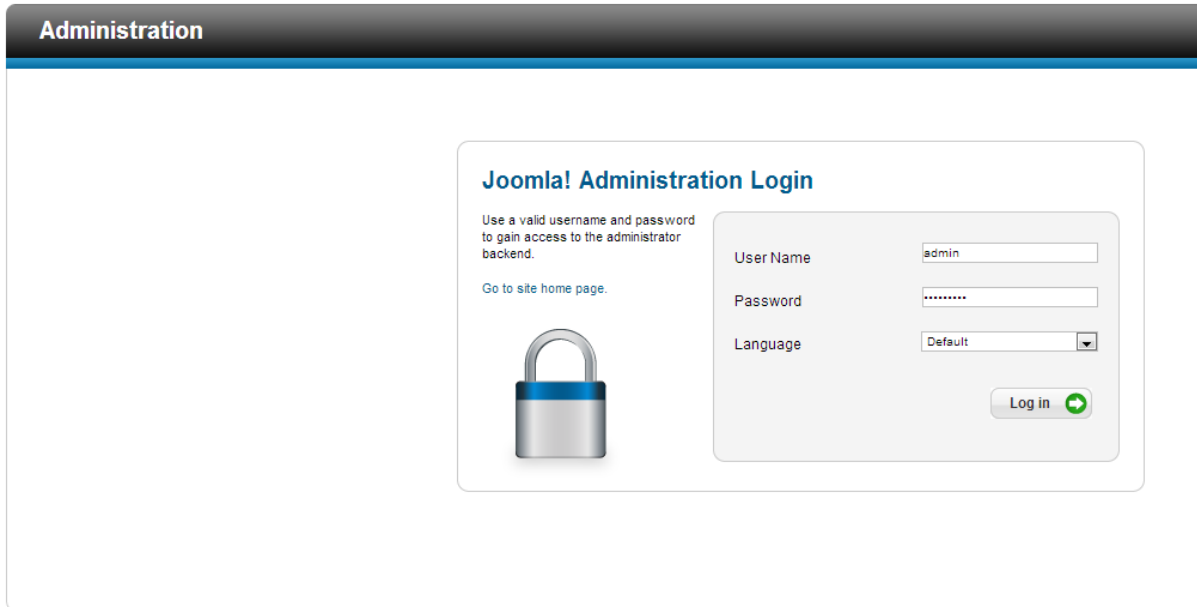


# NTeam Module User Guide

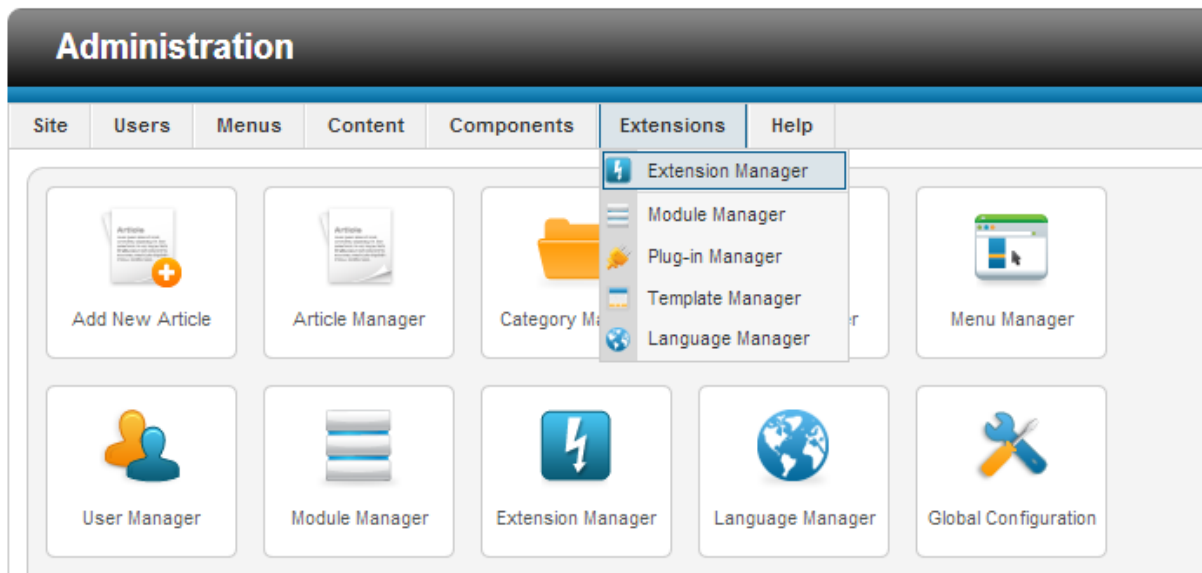
## Installation:

1. Log into the Joomla backend of your website.




Joomla!® is free software released under the GNU General Public License.

2. Go to the Install/Uninstall Section under Extensions.



3. Locate the file mod\_nteam.zip on your system and click on “Upload and Install”.



## Extension Manager: Install

[Install](#) | [Update](#) | [Manage](#) | [Discover](#) | [Database](#) | [Warnings](#) | [Install languages](#)

---

### Upload Package File

Package File  mod\_nteam.zip

---


### Install from Directory

Install Directory

4. Done

[Install](#) | [Update](#) | [Manage](#) | [Discover](#) | [Database](#) | [Warnings](#) | [Install languages](#)

---

 Installing module was successful.

---

A module to display the team members.

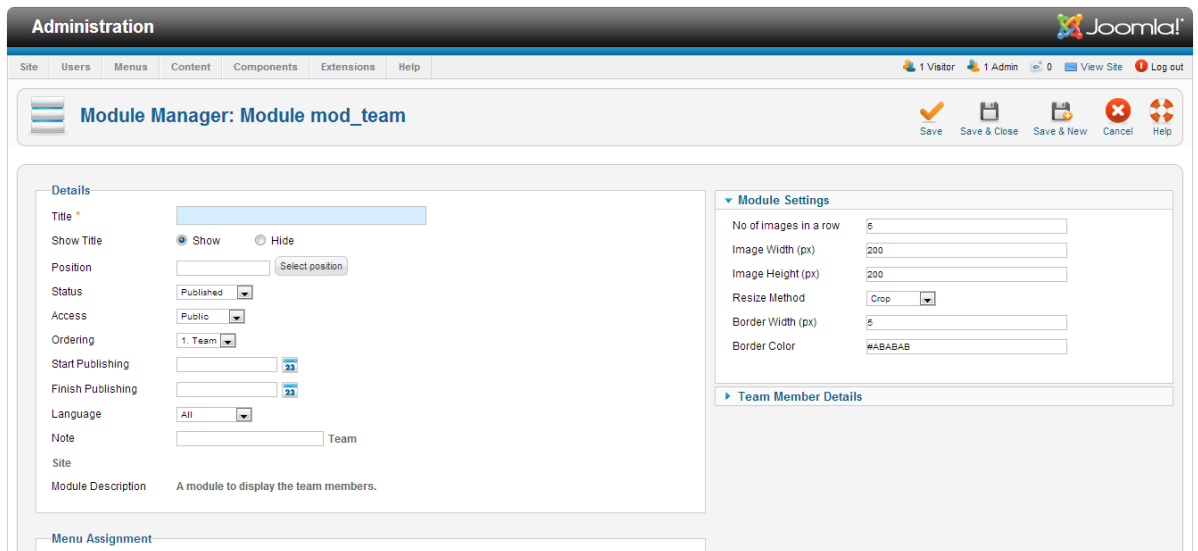
---

### Upload Package File

Package File  No file chosen

## Usage:

1. Go to “Module Manager” (Extensions -> Module Manager)
2. Click on “New”
3. Select “Team” from the list.
4. Now a page like this will be displayed -

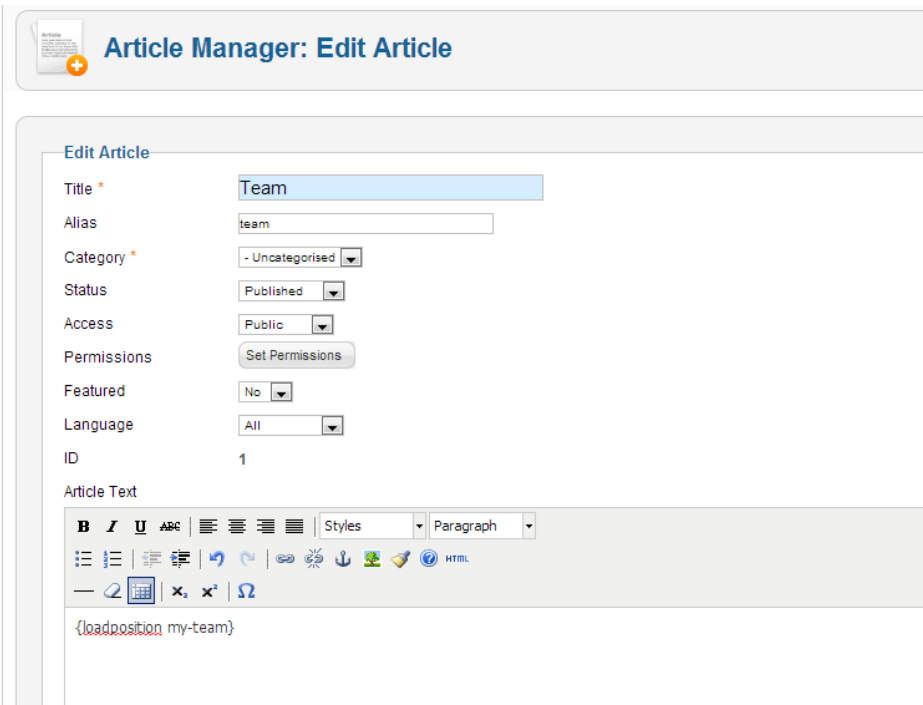


The screenshot shows the Joomla! Administration interface for the 'Module Manager: Module mod\_team'. The page is divided into several sections:

- Details:** Fields for Title, Show Title (radio buttons for Show/Hide), Position (with a 'Select position' button), Status (dropdown menu), Access (dropdown menu), Ordering (dropdown menu), Start Publishing and Finish Publishing (date pickers), Language (dropdown menu), Note, Site, and Module Description (A module to display the team members).
- Module Settings:** Fields for No of images in a row, Image Width (px), Image Height (px), Resize Method (dropdown menu), Border Width (px), and Border Color.
- Team Member Details:** A section with a plus icon to add members.
- Menu Assignment:** A section at the bottom.

The Joomla! logo and navigation menu are visible at the top.

5. Fill in the “Details”.
6. In the “Position” field enter any custom position. For e.g. “my-team”.
7. In the “Team Member Details” section add the details of all the members you want to display.
8. Now save the module after making sure that the “Status” is “Published”.
9. Now add a new article with content {loadposition my-team} and save it.



The screenshot shows the Joomla! Administration interface for the 'Article Manager: Edit Article'. The page is divided into several sections:

- Edit Article:** Fields for Title (Team), Alias (team), Category (Uncategorised), Status (Published), Access (Public), Permissions (Set Permissions button), Featured (No), Language (All), and ID (1).
- Article Text:** A rich text editor with a toolbar and a text area containing the code {loadposition my-team}.

The Joomla! logo and navigation menu are visible at the top.

10. Now add a menu item for the article you just created.

## Module Parameters:

Title *	Team	
Show Title	<input checked="" type="radio"/> Show <input type="radio"/> Hide	
Position	my-team	Select position
Status	Published	
Access	Public	
Ordering	1. Team	
Start Publishing	0000-00-00 00:00:00	
Finish Publishing	0000-00-00 00:00:00	
Language	All	
Note		
ID	101	Team Site
Module Description	A module to display the team members.	

Menu Assignment	
Module Assignment	On all pages
Menu Selection:	Select All Clear Selection Toggle Selection
Main Menu	Select All Clear Selection Toggle Selection
<input checked="" type="checkbox"/> - Home	
<input checked="" type="checkbox"/> - Team	

▼ Module Settings	
No of Images in a row	5
Image Width (px)	200
Image Height (px)	200
Resize Method	Crop
Border Width (px)	5
Border Color	#ABABAB
▶ Team Member Details	

### ▶ Module Settings

#### ▼ Team Member Details

Name

Field 1

Field 2

Image

Social Profile Link

Name

Field 1

Field 2

Image

Social Profile Link

Name

Field 1

Field 2

Image

Social Profile Link

**No. of images per row:** This perimeter specifies the number of images that would be present in row.

**Image Width and Image Height:** Specify the width and height of images to be displayed.

**Resize Method:** If the size of the image selected exceeds the width and height specified then that image is optimized to the specified width and height.

There are 5 options, 1. Crop 2. Exact 3. Auto 4. Landscape 5. Portrait

**Border Width:** Width of the border of image.

**Border Color:** Color of the border.

### Front end Demo:

Main Menu

▣ Home

▣ Team

Login Form

Hi Super User,

>Log out

Team

